

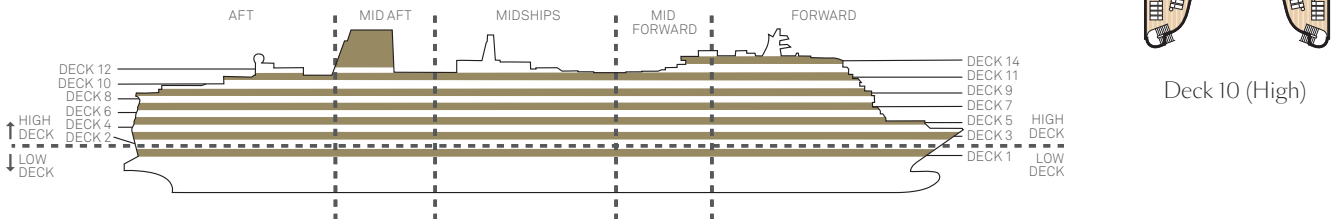
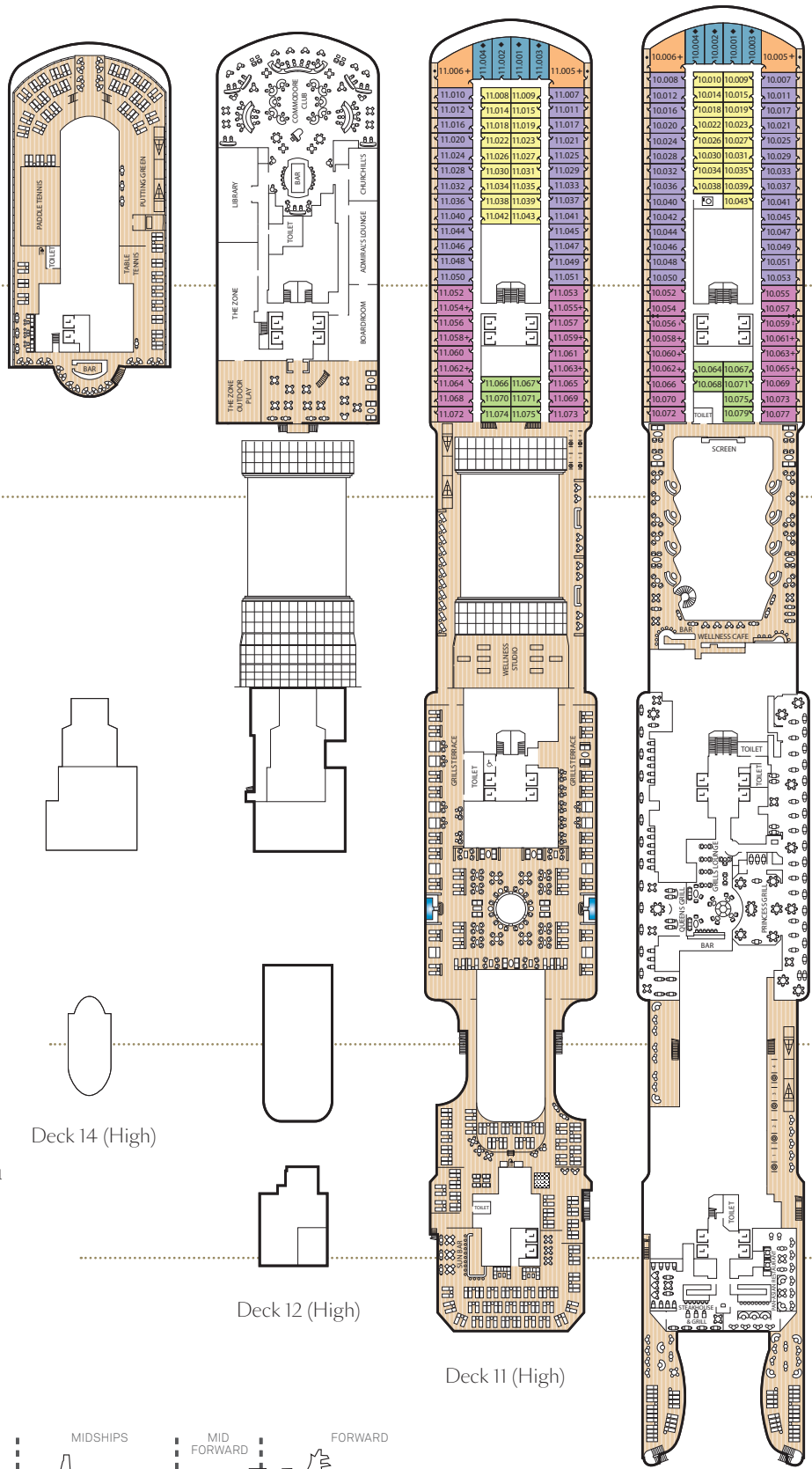
# Queen Anne deck plans.

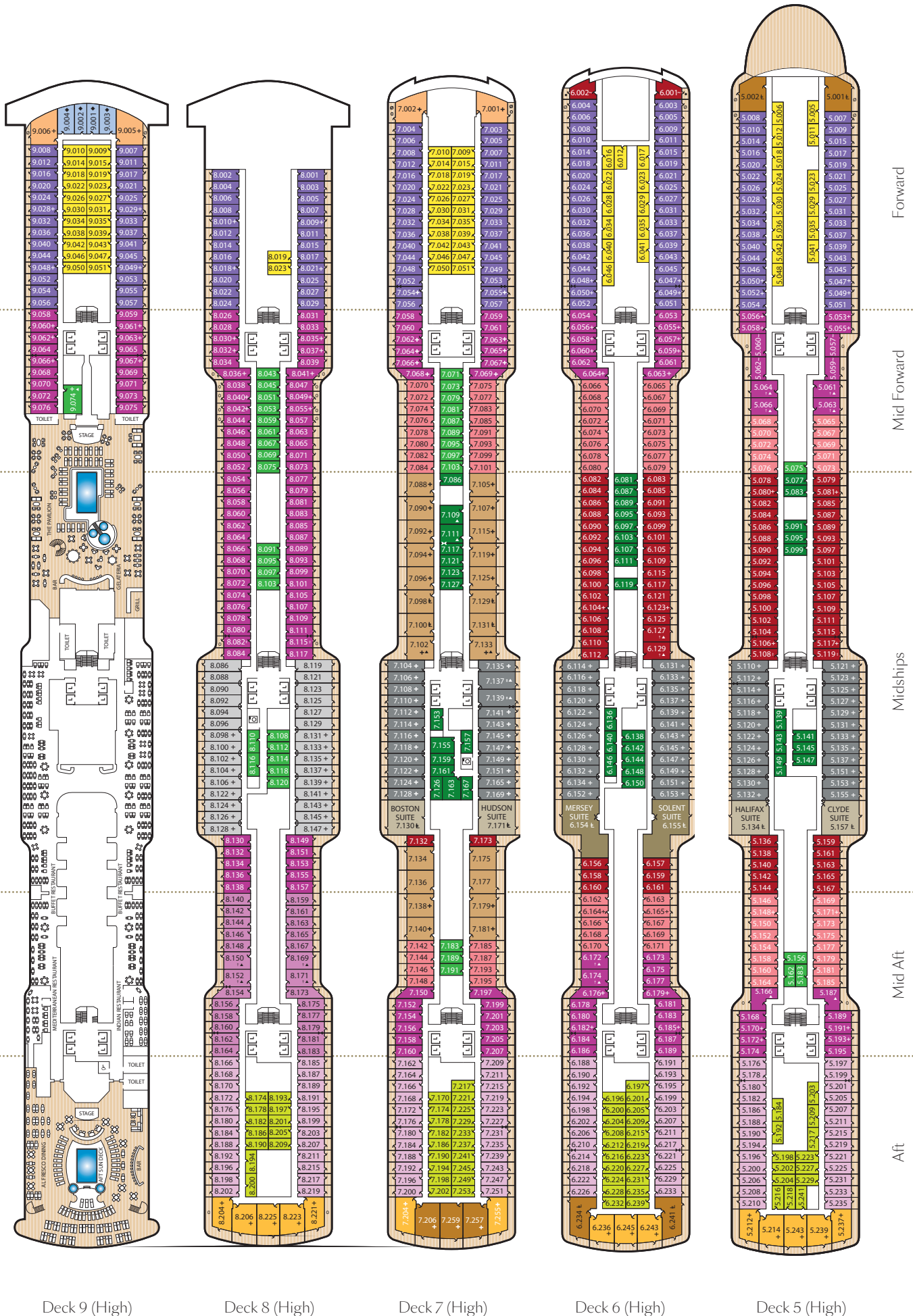
## Stateroom Category

<b>Grand Suites</b>		
Midships	High Deck 6	Q1
<b>Master Suite</b>		
Midships	High Decks 5,7	Q2
<b>Penthouse</b>		
Forward/Aft	High Decks 4,5,6,7	Q3
Midships	High Decks 7▲	Q4
<b>Queen Suites</b>		
Aft	High Decks 4,5,6,7,8	Q5
Forward	High Decks 7,9,10,11	Q6
<b>Princess Suites</b>		
Midships	High Decks 5,6,7▲	P1
Midships	High Decks 4,8	P2
<b>Club Balcony</b>		
Mid/Fwd	High Decks 5,6,7▲	A1
Midships	High Decks 5,6,7	A2
<b>Balcony</b>		
Midships	High Decks 5,6,7,8,9▲	BB
Midships	High Decks 4,8,10,11▲	BC
Aft	High Decks 5,6,7,8	BD
Aft/Forward	High Decks 4,5,6,7,8,9	BE
Forward	High Decks 4,10,11	BF
<b>Balcony (obstructed view)</b>		
Midships	High Deck 4▲	DB
Midships	High Decks 4▲	DC
<b>Deluxe Oceanview</b>		
Midships	Low Deck 1	EA
<b>Oceanview</b>		
Midships	Low Deck 1▲	EB
Midships	Low Deck 1	EC
Aft/Forward	Low Deck 1	EE
High Deck 9		EF
Forward	High Deck 4,10,11	EF
<b>Standard Inside</b>		
Midships	High Decks 5,6,7▲	IA
Midships	Low Deck 1, High Deck 9▲	IB
Midships	Low Deck 1, High Deck 4,10,11	IC
Aft	High Deck 5,6,7,8	ID
Aft/Forward	High Deck 4,5,6,7,8,9	IE
Forward	High Deck 4,10,11	IF

## Key to symbols

- L Lift
- † Indicates 2 lower berths and 1 upper berth
- + Indicates 3rd berth is a single sofabed
- ⌘ Indicates 3rd and 4th berth is a double sofabed
- ⌘ Indicates 3rd and 4th berth are a single sofabed and one upper bed
- ↔ Connecting staterooms
- Balcony is shaded by deck structure above
- ▲ Wheelchair accessible
- ~ Indicates alternative layout and configuration
- ◆ Staterooms have forward facing ocean views
- ⊖ Staterooms have partial metal fronted balconies
- Staterooms have metal fronted balconies





Deck 9 (High)

Deck 8 (High)

Deck 7 (High)

Deck 6 (High)

Deck 5 (High)

# Stateroom Category

## Grand Suites

Midships High Deck 6 **Q1**

## Master Suite

Midships High Decks 5,7 **Q2**

## Penthouse

Forward/Aft High Decks 4,5,6,7 **Q3**

Midships High Decks 7▲ **Q4**

## Queen Suites

Aft High Decks 4,5,6,7,8 **Q5**

Forward High Decks 7,9,10,11 **Q6**

## Princess Suites

Midships High Decks 5,6,7▲ **P1**

Midships High Decks 4,8 **P2**

## Club Balcony

Mid/Fwd High Decks 5,6,7▲ **A1**

Midships High Decks 5,6,7 **A2**

## Balcony

Midships High Decks 5,6,7,8,9▲ **BB**

Midships High Decks 4,8,10,11▲ **BC**

Aft High Decks 5,6,7,8 **BD**

Aft/Forward High Decks 4,5,6,7,8,9 **BE**

Forward High Decks 4,10,11 **BF**

## Balcony (obstructed view)

Midships High Deck 4▲ **DB**

Midships High Decks 4▲ **DC**

## Deluxe Oceanview

Midships Low Deck 1 **EA**

## Oceanview

Midships Low Deck 1▲ **EB**

Midships Low Deck 1 **EC**

Aft/Forward Low Deck 1, High Deck 9 **EE**

Forward High Deck 4,10,11 **EF**

## Standard Inside

Midships High Decks 5,6,7▲ **IA**

Midships Low Deck 1, High Deck 9▲ **IB**

Midships Low Deck 1, High Deck 4,10,11 **IC**

Aft High Deck 5,6,7,8 **ID**

Aft/Forward High Deck 4,5,6,7,8,9 **IE**

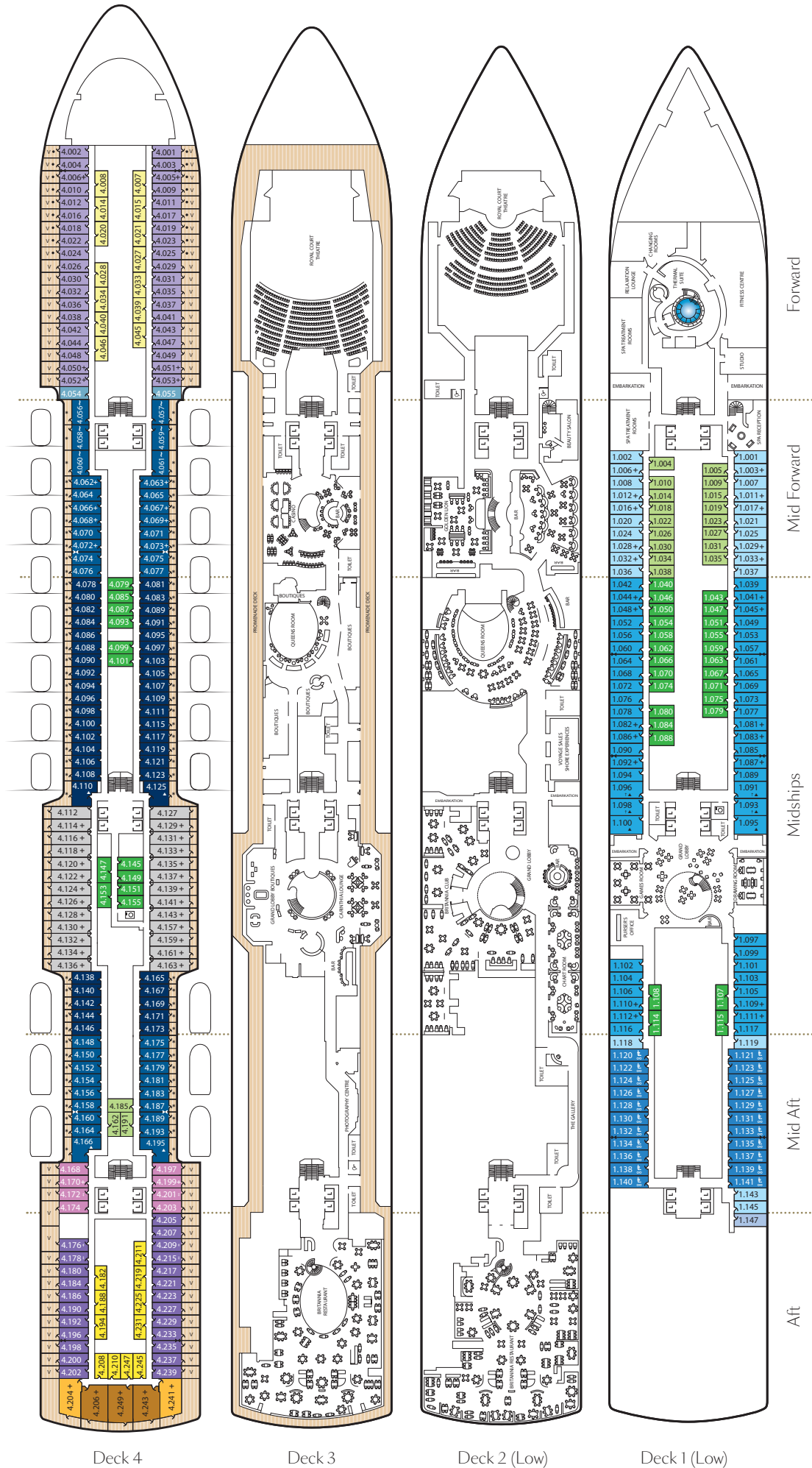
Forward High Deck 4,10,11 **IF**

## Key to symbols

- L Lift
- † Indicates 2 lower berths and 1 upper berth
- + Indicates 3rd berth is a single sofa bed
- ⊞ Indicates 3rd and 4th berth is a double sofa bed
- ‡ Indicates 3rd and 4th berth are a single sofa bed and one upper bed
- ↔ Connecting staterooms
- \* Staterooms have views obstructed by lifeboats and during Panama Canal transits lifeboats are adjacent to the balcony
- v Balcony visible from above
- ▲ Wheelchair accessible
- ~ Indicates alternative layout and configuration
- ∞ Staterooms have an additional shower room
- Staterooms have metal fronted balconies

## Ship facts

Maiden Season:	2024
Speed:	22 knots
Guest Capacity:	2,996
No. of Crew:	1,225
Length Overall:	1,058 feet
Width:	116.8 feet
Draft:	27.2 feet



Deck 4

Deck 3

Deck 2 (Low)

Deck 1 (Low)